



**BMW AROUND THE ISLAND RACE (ATIR) 2024**  
**COASTAL ROWING**  
**Race Bulletin for**  
**Iron, Relay and 10K races**

**Race Date: Saturday 30th November / Sunday 1<sup>st</sup> December 2024**

The BMW Around the Island Race (“ATIR”) is a **45km race around Hong Kong Island**.

Organised by : Royal Hong Kong Yacht Club (“RHKYC”)

Co-organiser : Hong Kong, China Rowing Association (“HKCRA”)

Venue : Royal Hong Kong Yacht Club, Kellett Island, Causeway Bay

### Race Course

The race starts and ends at the main clubhouse of the RHKYC at Kellett Island in Victoria Harbour. The course goes clockwise around Hong Kong Island, through the eastern end of the harbour, around past Shek O and Stanley. **Relay crews change at Middle Island**. The course then continues past Aberdeen and Green Island before entering the western end of Victoria Harbour where crews will have to navigate past the busy Macau and Central Ferry Piers before heading past the Hong Kong Convention and Exhibition Centre in Wan Chai and then finishing back at Kellett Island.

**Warning:** as with all extreme open water events, this race is not without its share of risk. This is not a race for novice rowers and coxswains. It can be challenging for even the most experienced rower. While the race course has relatively calm sections, it also includes the east coast of Hong Kong, where the swell in November can exceed 3m in height with wind gusts in excess of 45Km/h.

### Race Categories – Iron and 10K

**Note:** Rowers competing in the Iron and Relay races may not enter or participate in the 10k race.

Coxed Quad (4X+)	Double (2X)	Invitational Solo (1X)
Open	Open	Men
Women	Women	Women
Mixed	Mixed	

#### Note

Open = men and/or women crew members in any ratio

Women = all rowers in the crew must be women

Mixed = even number of men and women in a crew

*Coxswain may be either a man or woman in all categories.*

## Race Categories - Relay

Coxed Quad (4X+)	Double (2X)
Open Relay	Open Relay

### Note

Open = men and/or women crew members in any ratio  
 Coxswain may be either a man or woman in all categories.

## Entry Fee

Event	Boat type	Fee (HK\$)
<b>Iron</b>	Solo	800
	C2x	1,600
	C4x+	3,200
<b>Relay</b>	C2x	3,200
	C4x+	6,400
<b>10K</b>	Solo	400
	C2x	800
	C4x+	1600

## Boat Rental

Event	Boat type	Fee (HK\$)
<b>Iron</b>	Solo	600
	C2x	1,200
	C4x+	2,400
<b>Relay</b>	C2x	2,400
	C4x+	4,800
<b>10K</b>	Solo	200
	C2x	400
	C4x+	800

Note: The boat rental fee includes boat, oars, and safety equipment (life jackets, tow rope). Own boats may be used if they meet the World Rowing Coastal Rowing Boat specifications and safety requirements (World Rowing Rules of Racing Appendix R18, Coastal Rowing Competition Regulation 13).

## Support Boats

Support Boat – Mandatory for Iron and Relay. Every crew is required to have a support boat alongside them throughout the race. Contact details for support boats will be provided by the RHKYC. Cost per boat will be in the range of HK\$6,000. There must be a designated **Support Manager** on board who will keep in regular contact with race safety officials.

Spectator Boat - Optional: Junk Boats may not be used as support craft for the race. Junks may be used for spectators, but they must remain behind the boat they are supporting and must not impede other crews or any support boats.

## Schedule prior to Race Day

The registration document will give you the option when registering of using an Organising Committee allocated boat or using your own boat.

22 Jul	Registration opens for all three races (Iron, Relay and 10k).
16 Sep	Registration closes for crews wishing to use Organising Committee Boats
19 Sep	Confirmation of entries for crews using Organising Committee Boats (see note on Selection Criteria below)
26 Sep	Payment deadline for crews using Organising Committee Boats
18 Oct	Registration closes for crews using their own Boats
29 Nov	Race Safety briefing and Welcome party at Kellett Island

Note: the Race Safety briefing is mandatory. Only 1 person per crew to attend. If no members of a crew can attend the Race Safety briefing, please inform the race organisers as soon as possible as this may affect your ability to race.

## Registration link

Iron and Relay race	<a href="#">Register here</a>
10K race	<a href="#">Register here</a>
Website	<a href="https://www.atirhkrowing.com/">https://www.atirhkrowing.com/</a>

## Selection Criteria

1. All Clubs should note that the number of boats available for rental is limited;
2. If the number of *registrations* received exceeds the number of boats available, the Organising Committee shall conduct a draw to distribute the available boats in the fairest possible manner in line with the objectives of ATIR as a classic international coastal rowing race;
3. The allocation of boats and final accepted entries will be notified to clubs on 5<sup>th</sup> October, four days after close of Registration;
4. Crews not allocated a boat shall not be accepted for entry;
5. Crews may bring their own boats subject to point 6., below. All crews bringing their own boats will be accepted for entry and should notify the Organising Committee at the time of Registration that they will provide their own boat.
6. All boats used in the ATIR must be in good condition and must fully meet the design specifications and safety standards as mentioned in the Boat Rental section above.

**Race day schedule (to be confirmed)****Saturday 30 Nov (Iron)**

0700	Race control desk opens
0730-0830	Support boats launch from the pontoon
0730-0830	Rowing boats launch from the slipway (Note 1).
0800	Race start (in waves)

**Saturday 30 Nov (10k)**

1400	Race control desk opens
1445	Rowing boats launch from the slipway (Note 1).
1530	Race start (in waves)

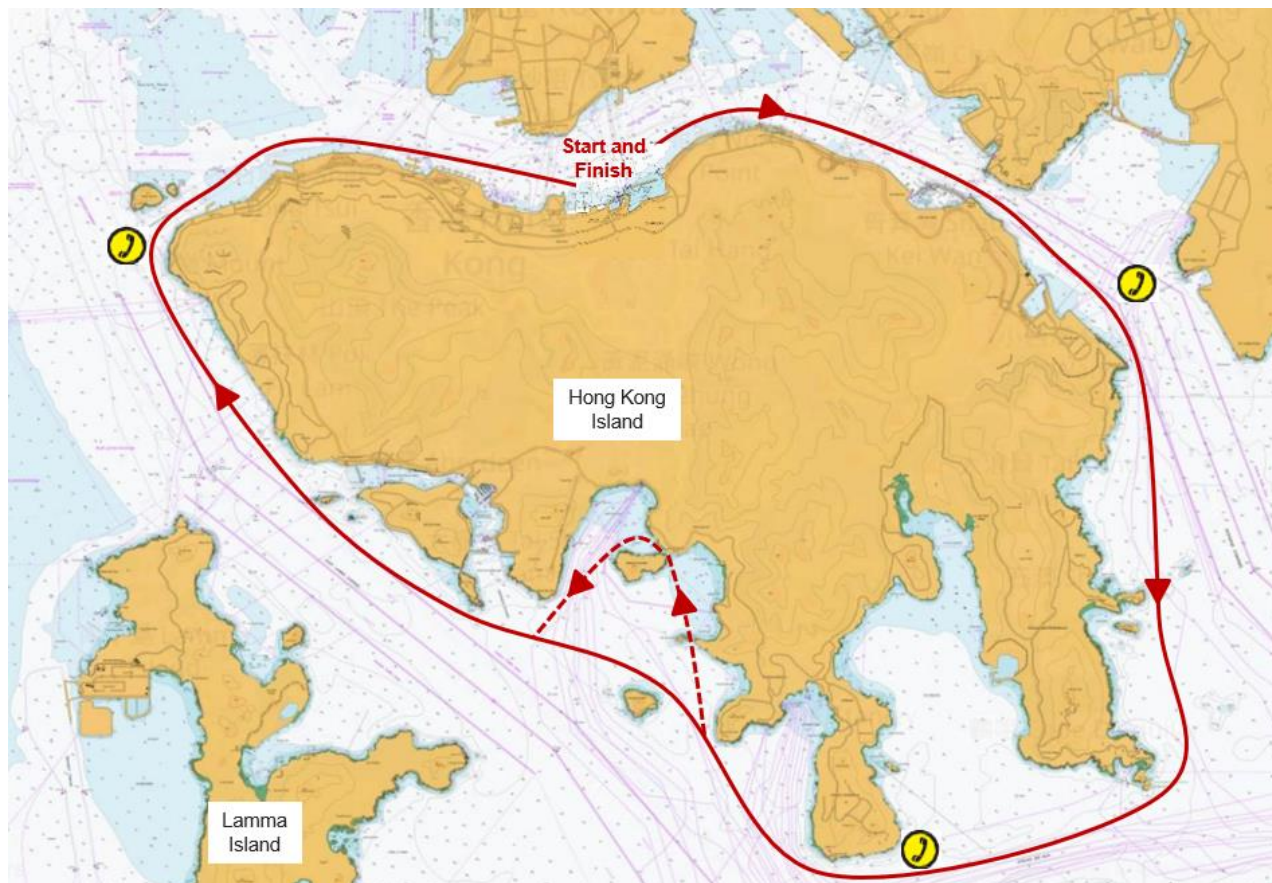
**Sunday 01 Dec (Relay)**

0700	Race control desk opens
0730-0830	Support boats launch from the pontoon
0730-0830	Rowing boats launch from the Slipway (Note 1).
0800	Race start (in waves)

**Note 1:** boats should be on the water at least 30mins prior to scheduled start time.

## ATIR Race Course – Iron and Relay

Full details of the race course along with a safety briefing document will be circulated to participants before race day.



### Notes;

After Stanley Bay:

- Iron crews – stay north of Round Island and continue in direction of Ap Lei Chau.
- Relay crews - divert to Middle Island pontoon for crew change

For those doing the 10K race, details of the course will follow.

## Weather in Hong Kong in November

Average daily air temperature	26°C	Average water temperature	23°C
Average relative humidity	73%	Average monthly rainfall	41mm
Average wind speed	20Km/hr	Prevailing wind direction	North easterly

## Tides @ Quarry Bay

30 Nov	Low tide	0.8m at 0303hrs
	High tide	1.6m at 0949hrs
	Low tide	1.3m at 1339hrs
	High tide	2.4m at 2007hrs
01 Dec	Low tide	0.7m at 0338hrs
	High tide	1.6m at 1033hrs
	Low tide	1.4m at 1403hrs
	High tide	2.5m at 2026hrs

## Tidal Stream Prediction

In the context of navigational safety, the Hong Kong Hydrographic Office (“HKHO”) of the Marine Department has taken on a role primarily as provider of nautical information for port users. The HKHO services include tidal stream predictions and competitors are welcome to review these at the following link -

[https://current.hydro.gov.hk/main/prediction\\_static.php?lang=en](https://current.hydro.gov.hk/main/prediction_static.php?lang=en)

*Note: The organizing committee accepts no responsibility for such predictions and the decision of whether to refer to these lies wholly with the competing crews.*

## Contact Information

If you require any further information at this stage, then please send an email to:

[ATIRRowing@rhkyc.org.hk](mailto:ATIRRowing@rhkyc.org.hk) or [rowing.manager@rhkyc.org.hk](mailto:rowing.manager@rhkyc.org.hk)

END